

ETAILS

24

CARNEGIE PAVILION • MACRO MUSEUM • MICHAEL PARADAY COMMUNITY SCHOOL • JEWISH
COMMUNITY CENTER MAINZ • CHEVAL NOIR • TREE ADVENTURE • TANG PALACE • YELLOW DIAMOND
FORMULA1 KOREA INTERNATIONAL CIRCUIT • THE FRENCH PAVILION - EXPO 2010 SHANGHAI • CAR
PARK IN SOISSONS • OFFICE BUILDING IN GRENOBLE • NEW BRIDGE IN CHOISY-LE-ROI • SULWHASOO
FLAGSHIP STORE • METROPOL PARASOL



FOCUS

PLAYGROUND BUILDING

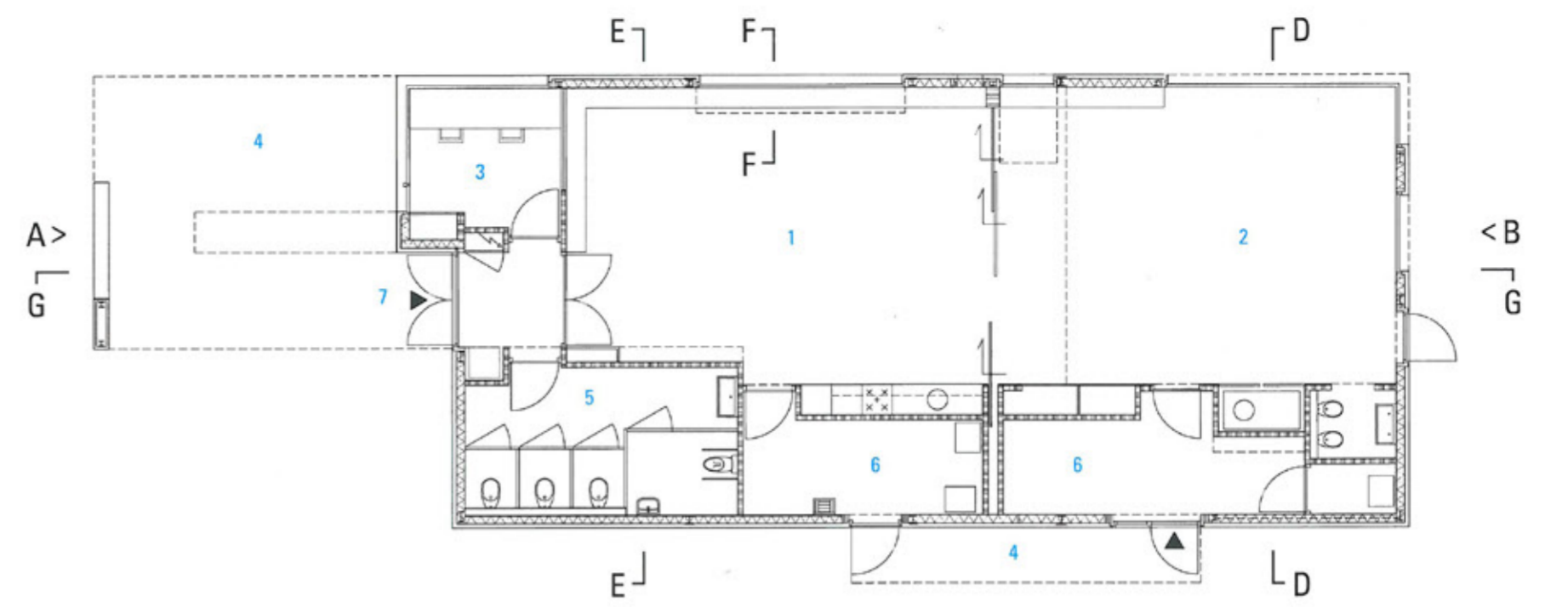
어린이 놀이시설
 Van Rooijen Architecten | Theo Van Rooijen, Faranak Nourbakhsh
 반 루이엔 아키텍트 | 테오 반 루이엔, 파라나크 노이박스



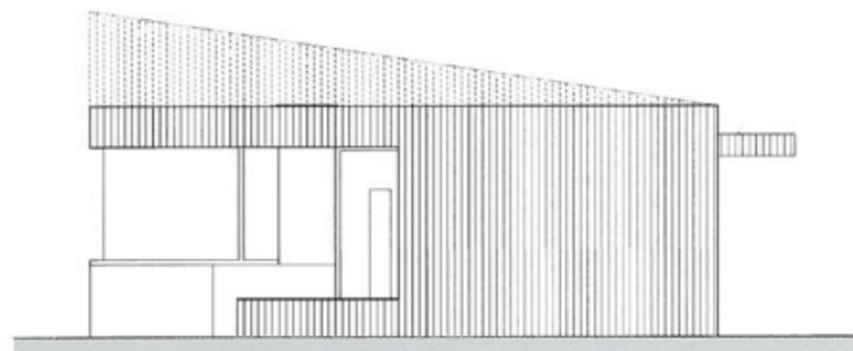
In an inner courtyard close to the city center of Utrecht a playground is situated for the children of the neighborhood. The old existing building on the playground was to be replaced by a new one and for a modest, durable and safe new building that would upgrade the playground and appeal to children. By means of a movable partition the spaces can be interlinked to provide space for different activities and multiple uses and to separate spaces for a kindergarten within a very tight budget a colorful light - hearted object was designed and introduced in the playground. The relationship between inside and outside is playfully strengthened with specific openings and windows. A large covered canopy for sheltered play features the front of the building. Natural wood and color determines the cozy and comfortable atmosphere of the interior.

Location Utrecht, The Netherlands
 Use Playground
 Completion 2010. 4
 Photographer Cornbread Works

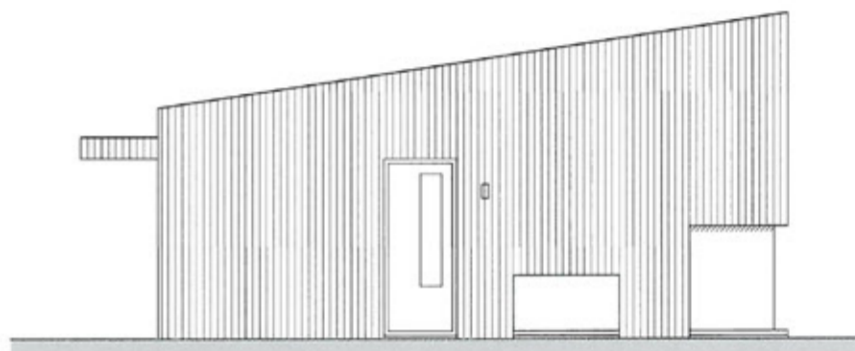
위치 네덜란드 우트레흐트
 용도 놀이시설
 완공 2010. 4
 사진 콘브레드 워크스



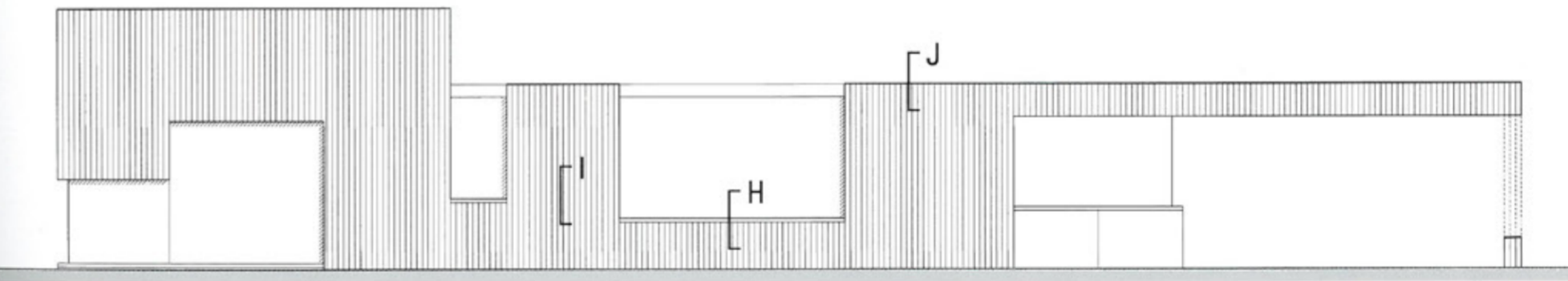
floor plan



elevation A



elevation B



elevation C

- | | | | |
|------------|-------------|---------|-------|
| 1 PLAYROOM | 5 WASHROOMS | 1 놀이 공간 | 5 세면실 |
| 2 DAYCARE | 6 STORAGE | 2 보육 공간 | 6 창고 |
| 3 OFFICE | 7 ENTRANCE | 3 사무실 | 7 입구 |
| 4 CANOPY | | 4 캐노피 | |

어린이 놀이시설은 주변 지역의 어린이들을 위해 우트레흐트 시내 중심부에서 가까운 곳에 만들어졌다. 설계자는 오래된 기존 건물을 새로운 시설로 교체하면서, 기존의 놀이시설을 한 단계 높이기 위해 현대적이고 견고한 건축물을 만들었다. 각 공간들이 서로 연결되고, 어린이들이 다양한 활동을 할 수 있도록 이동식 파티션을 설치했다. 저렴한 경비로 지어진 놀이시설은 가벼운 느낌이지만 다채로운 공간으로 만들어졌다. 어린이들의 시선에 맞게 입구와 창문을 배치하였으며, 이는 내부 공간과 외부 공간이 이어지는 듯한 느낌을 준다. 놀이시설을 덮고 있는 캐노피는 건물의 정면을 강조한다. 천연 목재와 밝은 톤의 색상을 사용하여 내부의 분위기를 아늑하고 편안하게 하였다.





- 1 VENTILATION OPENINGS IN WOODEN LATTICE
- 2 MOUNTED ENAMELED ALUMINIUM IN COLOUR
- 3 MULTIPLEX / MOISTURE BARRIER / INSULATION

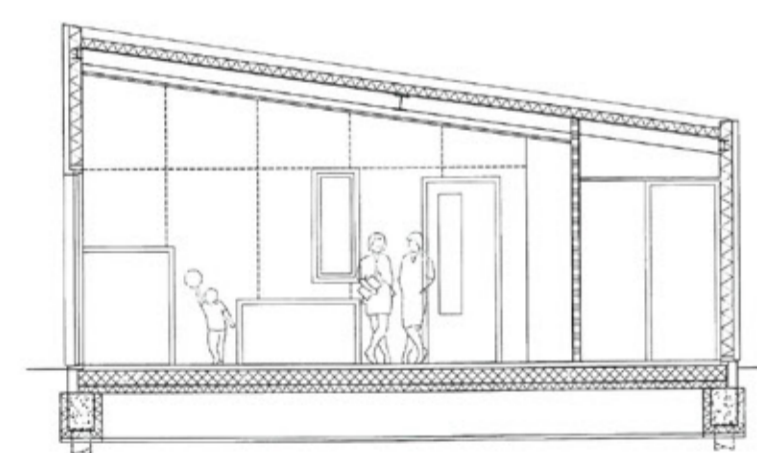
- 4 ALUMINIUM PROFILE
- 5 WOODEN WINDOW FRAME
- 6 STEEL BEAM
- 7 BITUMINOUS SURFACE INSULATION / MOISTURE BARRIER / INSULATION / MULTIPLEX / WOODEN BEAM / INSULATION / BLACK FABRIC / PERFORATED MULTIPLEX

- 8 PLEX / WOODEN BEAM / INSULATION / BLACK FABRIC / PERFORATED MULTIPLEX

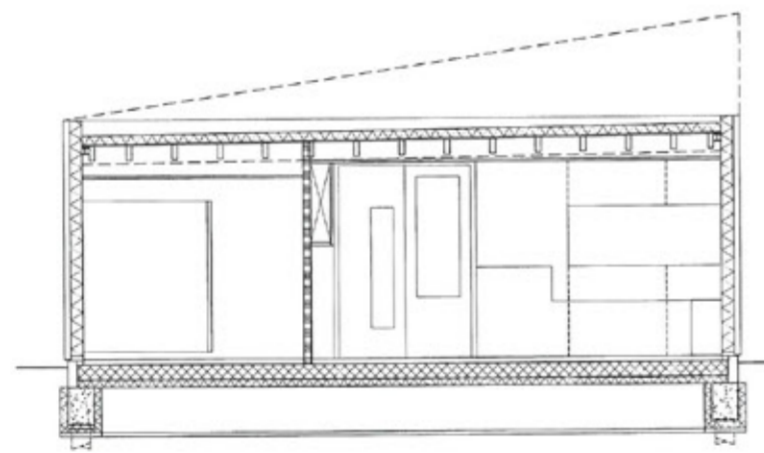
- 1 목조 격자의 통풍구
- 2 에나멜 칠한 고정 알루미늄
- 3 멀티플렉스 / 수분 장벽 / 단열재 / 수분 - 방출제

- 4 자외선 차단용 검은색 은박지 / 환기 / 목재 격자 무늬 알루미늄 프로파일
- 5 목재 창 프레임
- 6 철제 빔
- 7 역청 표면 단열재 / 수분벽 / 단열재 / 멀티플렉스 / 목재 빔 / 단열재 / 검은 천 / 타공 멀티플렉스

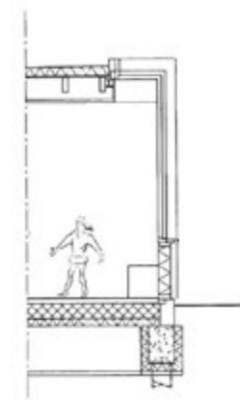
- 8 PLEX / WOODEN BEAM / INSULATION / BLACK FABRIC / PERFORATED MULTIPLEX



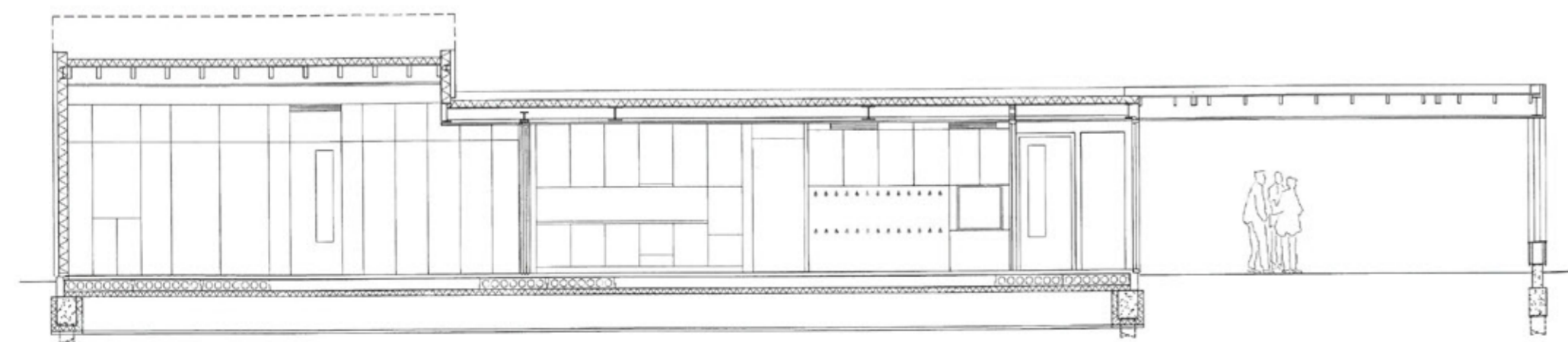
section D



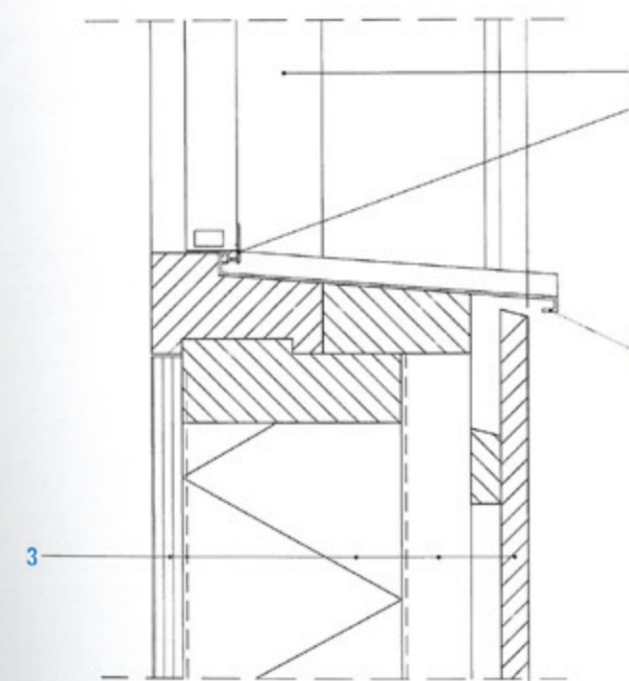
section E



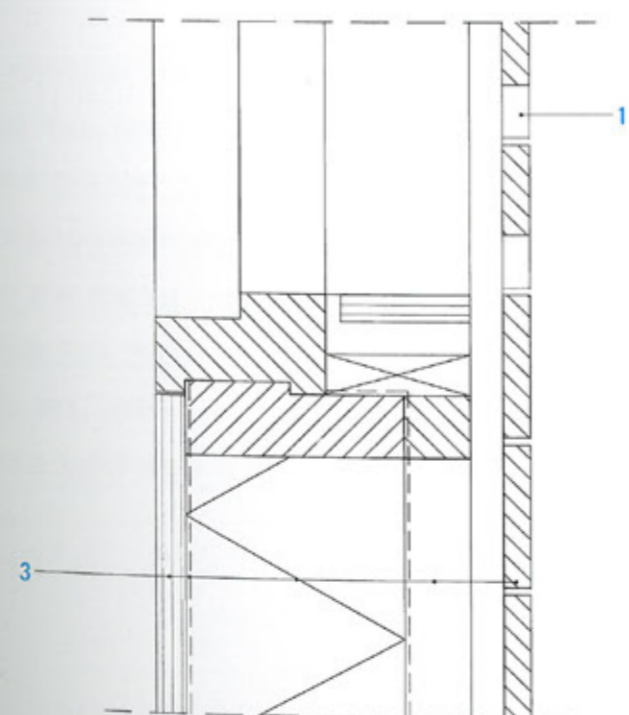
section F



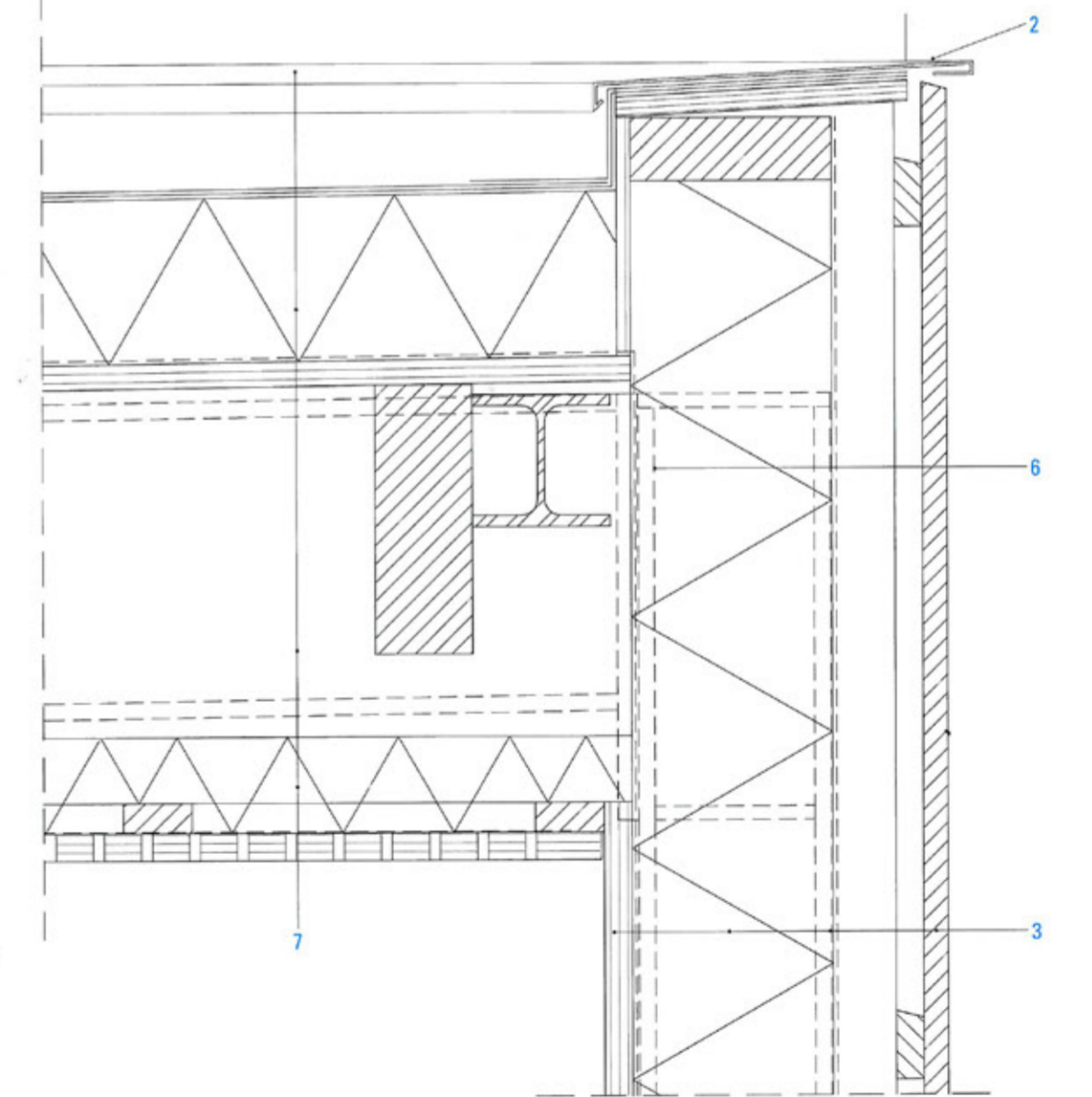
section G



outer wall detail H



outer wall detail I



outer wall detail J